

Product Features

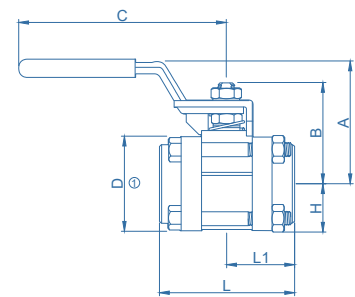
- Stainless steel, carbon steel materials
- Wide selection of seat materials, PTFE is standard
- On-off (2-way) valves
- Compensating seat design
- Live-loaded, two-piece stem packing
- Quarter-turn actuation
- Variety of end connections in 1/8 to 2 in. and 6 to 25 mm sizes
- Optional vent porting



Pressure-Temperature Ratings

Series	VBV4A /4B /4C	VBV4D /4E	VBV4A /4B /4C /4D /4E
Material	316		304
Temperature, °F (°C)	Working Pressure, psig (bar)		
-20 A17(-28) to 100 (37)	2200 (151)	1500 (103)	2200 (151)
150 (65)	1850 (127)	1210 (83.3)	1850 (127)
200 (93)	1500 (103)	930 (64.0)	1500 (103)
300 (148)	800 (55.1)	780 (53.7)	800 (55.1)
350 (176)	560 (38.5)	560 (38.5)	560 (38.5)
400 (204)	330 (22.7)	330 (22.7)	330 (22.7)

Schematic Drawing



Dimensions (mm)

Female NPT End Connections

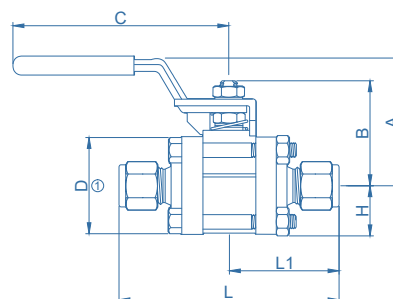
Size in.	Ordering Number	Orifice	Cv	Dimensions, in (mm)						
				L	L1	A	B	H	C	D ①
1/8	SS-VBV4A-F2	0.281 (7.1)	3.8	2.16 (54.9)	1.08 (27.4)	1.66 (42.2)	1.26 (32.0)	0.68 (17.3)	2.37 (60.2)	1.35 (34.3)
1/4	SS-VBV4A-F4	0.281 (7.1)	3.8	2.16 (54.9)	1.08 (27.4)	1.66 (42.2)	1.26 (32.0)	0.68 (17.3)	2.37 (60.2)	1.35 (34.3)
3/8	SS-VBV4B-F6	0.516 (13.1)	12	2.70 (68.6)	1.35 (34.3)	2.35 (59.7)	1.79 (45.5)	0.89 (22.6)	4.50 (114)	1.78 (45.2)
1/2	SS-VBV4B-F8	0.516 (13.1)	12	2.70 (68.6)	1.35 (34.3)	2.35 (59.7)	1.79 (45.5)	0.89 (22.6)	4.50 (114)	1.78 (45.2)
3/4	SS-VBV4C-F12	0.875 (22.2)	31	3.59 (91.2)	1.80 (45.7)	2.94 (74.7)	2.52 (64.0)	1.25 (31.8)	6.00 (152)	2.50 (63.5)
1	SS-VBV4C-F16	0.875 (22.2)	38	3.59 (91.2)	1.80 (45.7)	2.94 (74.7)	2.52 (64.0)	1.25 (31.8)	6.00 (152)	2.50 (63.5)
1-1/4	SS-VBV4D-F20	1.250 (31.8)	90	4.39 (112)	2.19 (55.6)	4.03 (102)	3.14 (79.8)	1.53 (38.9)	9.14 (232)	3.06 (77.7)
1-1/2	SS-VBV4D-F24	1.250 (31.8)	100	4.39 (112)	2.19 (55.6)	4.03 (102)	3.14 (79.8)	1.53 (38.9)	9.14 (232)	3.06 (77.7)
2	SS-VBV4E-F32	1.500 (38.1)	130	4.94 (125)	2.47 (62.7)	4.16 (106)	3.36 (85.3)	1.74 (44.2)	9.14 (232)	3.47 (88.1)

① Height and width of B through E series flanges; Height of A series flange is 1.59 in. (40.4 mm); Width is D dimension.



Ball Valves / Kugelhähne

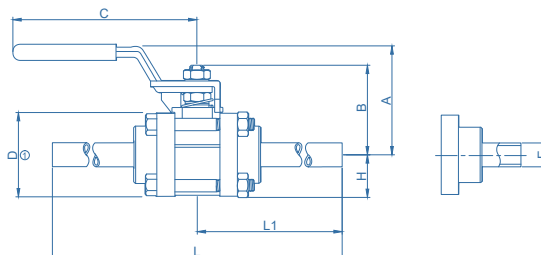
VBV4 Series



Tube Fitting End Connections

Size in.	Ordering Number	Orifice in.(mm)	Cv	Dimensions, in.(mm)						
				L	L1	A	B	H	C	D ①
1/4"	SS-VBV4A-04	0.188 (4.8)	1.2	3.17 (80.5)	1.59 (40.4)	1.66 (42.2)	1.26 (32.0)	0.68 (17.3)	2.37 (60.2)	1.35 (34.3)
3/8"	SS-VBV4A-06	0.281 (7.1)	3.8	3.17 (80.5)	1.59 (40.4)	1.66 (42.2)	1.26 (32.0)	0.68 (17.3)	2.37 (60.2)	1.35 (34.3)
1/2"	SS-VBV4B-08	0.406 (10.3)	7.5	4.04 (103)	2.02 (51.3)	2.35 (59.7)	1.79 (45.5)	0.89 (22.6)	4.50 (114)	1.78 (45.2)
3/4"	SS-VBV4B-12	0.516 (13.1)	13.6	4.04 (103)	2.02 (51.3)	2.35 (59.7)	1.79 (45.5)	0.89 (22.6)	4.50 (114)	1.78 (45.2)
1"	SS-VBV4C-16	0.875 (22.2)	40	5.36 (136)	2.68 (68.1)	2.94 (74.7)	2.52 (64.0)	1.25 (31.8)	6.00 (152)	2.50 (63.5)
1-1/2"	SS-VBV4D-24	1.250 (31.8)	100	7.59 (193)	3.79 (96.3)	4.03 (102)	3.14 (79.8)	1.53 (38.9)	9.14 (232)	3.06 (77.7)
2"	SS-VBV4E-32	1.500 (38.1)	130	9.95 (253)	4.97 (126)	4.16 (106)	3.36 (85.3)	1.74 (44.2)	9.14 (232)	3.47 (88.1)
6mm	SS-VBV4A-6M	0.188 (4.8)	1.2	3.17 (80.5)	1.59 (40.4)	1.66 (42.2)	1.26 (32.0)	0.68 (17.3)	2.37 (60.2)	1.35 (34.3)
8mm	SS-VBV4A-8M	0.250 (6.4)	2.5	3.17 (80.5)	1.59 (40.4)	1.66 (42.2)	1.26 (32.0)	0.68 (17.3)	2.37 (60.2)	1.35 (34.3)
10mm	SS-VBV4A-10M	0.281 (7.1)	3.8	3.20 (81.3)	1.60 (40.6)	1.66 (42.2)	1.26 (32.0)	0.68 (17.3)	2.37 (60.2)	1.35 (34.3)
12mm	SS-VBV4B-12M	0.375 (9.5)	7.5	4.04 (103)	2.02 (51.3)	2.35 (59.7)	1.79 (45.5)	0.89 (22.6)	4.50 (114)	1.78 (45.2)
18mm	SS-VBV4B-18M	0.516 (13.1)	13.6	4.04 (103)	2.02 (51.3)	2.35 (59.7)	1.79 (45.5)	0.89 (22.6)	4.50 (114)	1.78 (45.2)
25mm	SS-VBV4C-25M	0.875 (22.2)	40	5.36 (136)	2.68 (68.1)	2.94 (74.7)	2.52 (64.0)	1.25 (31.8)	6.00 (152)	2.50 (63.5)

① Height and width of B through E series flanges. Height of A series flange is 1.59 in. (40.4 mm); Width is D dimension.

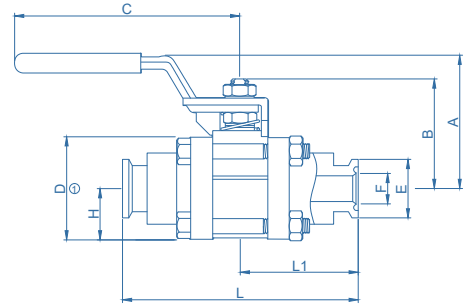


Tube Extention End Connections

Size in.	Wall thickness	Ordering Number	Orifice in.(mm)	Cv	Dimensions, in.(mm)							
					E	L	L1	A	B	H	C	D ①
1/4"	0.035	SS-VBV4A-TW4T35	0.180 (4.6)	1.1	0.250 (6.4)	8.12 (206)	4.05 (103)	1.66 (42.2)	1.26 (32.0)	0.68 (17.3)	2.37 (60.2)	1.35 (34.3)
3/8"	0.035	SS-VBV4A-TW6T35	0.281 (7.1)	3.8	0.375 (9.5)	8.12 (206)	4.05 (103)	1.66 (42.2)	1.26 (32.0)	0.68 (17.3)	2.37 (60.2)	1.35 (34.3)
1/2"	0.049	SS-VBV4B-TW8T49	0.402 (10.2)	7.2	0.500 (12.7)	8.51 (216)	4.26 (108)	2.35 (59.7)	1.79 (45.5)	0.89 (22.6)	4.50 (114)	1.78 (45.2)
1/2"	0.065	SS-VBV4B-TW8T65	0.370 (9.4)	6.1	0.500 (12.7)	8.51 (216)	4.26 (108)	2.35 (59.7)	1.79 (45.5)	0.89 (22.6)	4.50 (114)	1.78 (45.2)
3/4"	0.065	SS-VBV4C-TW12T65	0.620 (15.7)	18	0.750 (19.1)	9.53 (242)	4.77 (121)	2.94 (74.7)	2.52 (64.0)	1.25 (31.8)	6.00 (152)	2.50 (63.5)
1"	0.065	SS-VBV4D-TW16T65	0.870 (22.1)	36	1.000 (25.4)	9.53 (242)	4.77 (121)	2.94 (74.7)	2.52 (64.0)	1.25 (31.8)	6.00 (152)	2.50 (63.5)
1-1/2"	0.065	SS-VBV4D-TW24T65	1.250 (31.8)	100	1.500 (38.1)	10.5 (267)	5.27 (134)	4.03 (102)	3.14 (79.8)	1.53 (38.9)	9.14 (232)	3.06 (77.7)
2"	0.065	SS-VBV4E-TW32T65	1.500 (38.1)	130	2.000 (50.1)	11.3 (287)	5.65 (144)	4.16 (106)	3.36 (85.3)	1.74 (44.2)	9.14 (232)	3.47 (88.1)

① Height and width of B through E series flanges. Height of A series flange is 1.59 in. (40.4 mm); Width is D dimension.





Sanitary Fitting End Connections

Size in.	Ordering Number	Orifice in.(mm)	Cv	Dimensions, in.(mm)								
				E	F	L	L1	A	B	H	C	D ^①
TS Series (ASME-BPE)												
1/2	SS-VBV4B-TSC8	0.370 (9.4)	7.5	0.99 (25.1)	0.37 (9.4)	3.5 (88.9)	1.75 (44.4)	2.35 (59.7)	1.79 (45.5)	0.89 (22.6)	4.5 (114)	1.78 (45.2)
3/4	SS-VBV4C-TSC12	0.516 (13.1)	15	0.99 (25.1)	0.62 (15.7)	3.5 (88.9)	1.75 (44.4)	2.35 (59.7)	1.79 (45.5)	0.89 (22.6)	4.5 (114)	1.78 (45.2)
1	SS-VBV4E-TSC16	0.873 (22.2)	42	1.99 (50.5)	0.87 (22.1)	4.5 (114)	2.25 (57.2)	2.94 (74.7)	2.52 (64)	1.25 (31.8)	6 (152)	2.5 (63.5)
1-1/2	SS-VBV4B-TSC24	1.250 (31.8)	100	1.99 (50.5)	1.37 (34.8)	5.5 (140)	2.75 (69.9)	4.03 (102)	3.14 (79.8)	1.53 (38.9)	9.14 (232)	3.06 (77.7)
2	SS-VBV4D-TSC32	1.500 (38.1)	130	2.52 (64)	1.87 (47.5)	6.25 (159)	3.12 (79.2)	4.16 (106)	3.36 (85.3)	1.74 (44.2)	9.14 (232)	3.47 (88.1)
SC Series (ISO2852 standard)												
1/2	SS-VBV4B-SC8	0.281 (7.1)	7.1	0.99 (25.1)	0.37 (9.4)	3.56 (90.4)	1.78 (45.2)	1.66 (42.2)	1.26 (32)	0.68 (17.3)	2.37 (60.2)	1.35 (34.3)
3/4	SS-VBV4C-SC12	0.516 (13.1)	13.2	0.99 (25.1)	0.62 (15.7)	4.06 (103)	2.03 (51.5)	2.35 (59.7)	1.79 (45.5)	0.89 (22.6)	4.5 (114)	1.78 (45.2)
1	SS-VBV4E-SC16	0.873 (22.2)	42	1.99 (50.5)	0.87 (22.1)	4.5 (114)	2.25 (57.2)	2.94 (74.7)	2.52 (64)	1.25 (31.8)	6 (152)	2.5 (63.5)
1-1/2	SS-VBV4B-SC24	1.250 (31.8)	100	1.98 (50.3)	1.37 (34.8)	5.5 (140)	2.75 (69.9)	4.03 (102)	3.14 (79.8)	1.53 (38.9)	9.14 (232)	3.06 (77.7)
2	SS-VBV4D-SC32	1.500 (38.1)	130	2.52 (64)	1.87 (47.5)	6.25 (159)	3.12 (79.2)	4.16 (106)	3.36 (85.3)	1.74 (44.2)	9.14 (232)	3.47 (88.1)

① Height and width of B through E series flanges. Height of A series flange is 1.59 in. (40.4 mm); Width is D dimension.

Ordering Information

SL - VBV4A - 06 - Options

Body Material

SL: 316L
S4: 304

Series

A: A series
B: B series
C: C series
D: D series
E: E series

Seal Material

Intensive PTFE
Intensive PEEK
More material, please contact factory

End Connections

Tube fitting: see above tables
Female NPT: see above tables
Tube weld: see above tables
Sanitary: see above tables

